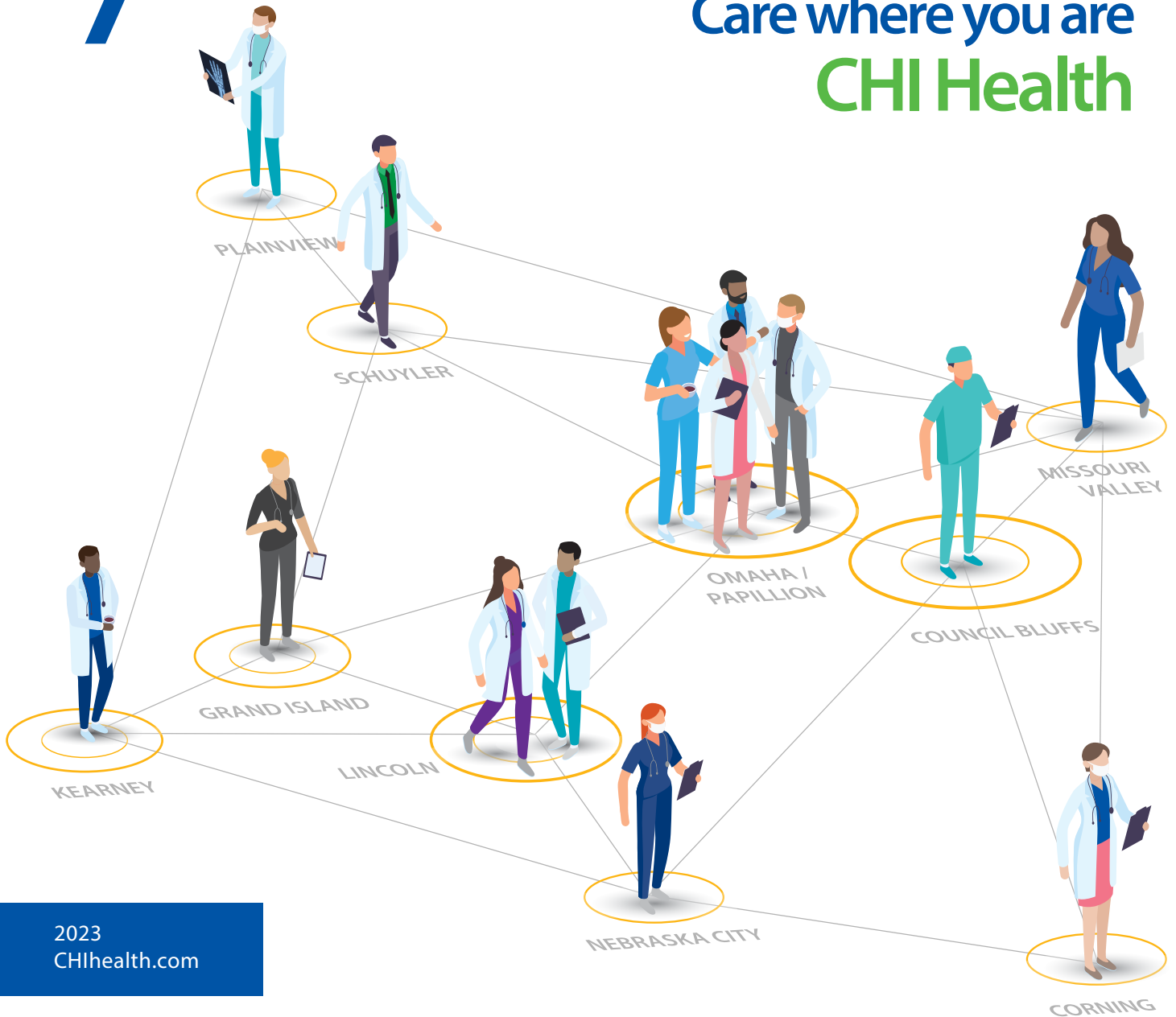


CHI Health™

better you

Care where you are
CHI Health



CHI Health: The best and brightest, caring for you

What's behind the care you receive at CHI Health? An exceptional team of professionals – more than 9,000 strong in Nebraska and Iowa. Together, they tallied nearly 1.8 million clinic visits and 56,258 hospital admissions.*

From sore throats to serious illnesses, we care for you, no matter where you live. Here are some of the things we do best.



One of world's first hospitals to offer the Watchman™ stroke prevention procedure. Our clinical research helps change how care is delivered on a national level.



Faster time starting treatment for the most serious heart attacks - as quick as 13 minutes compared to the national guideline of 90.



Latest artificial intelligence technology alerts neurosurgeons to first signs of stroke so treatment can begin in seconds.



First orthopedic surgeons in Nebraska to perform robotic-assisted complete knee replacements to create "perfect" new knees.



First stand-alone birth center (CHI Health Birth Center at Lincoln) in Nebraska and the state's only birth center inside a full-service hospital (CHI Health Birth Center at Immanuel).

 **32,524**
Total surgeries

 **7,790**
Births

 **199,178**
Emergency department visits

*July 2021-June 2022

Our promise to you

At CHI Health, we know that *A Better You* depends on a committed us. I'm proud to serve you alongside the best, brightest and most compassionate caregivers in the country.

We operate hospitals and clinics near you because we know that home is where healing happens. And who better to care for you than your friends and neighbors in four states - Nebraska, Iowa, North Dakota and Minnesota.

Whether you are expecting a baby, suffer a stroke, have a heart attack, or you're not sure what's going on, we're here to help you.

This magazine highlights some of the great care available where you live.

E.J. Kuiper
E.J. Kuiper
CHI Health CEO

What is great care? It's sweet relief when you're feeling your worst. And sage advice when you want to get better. You can depend on CHI Health Clinic for:

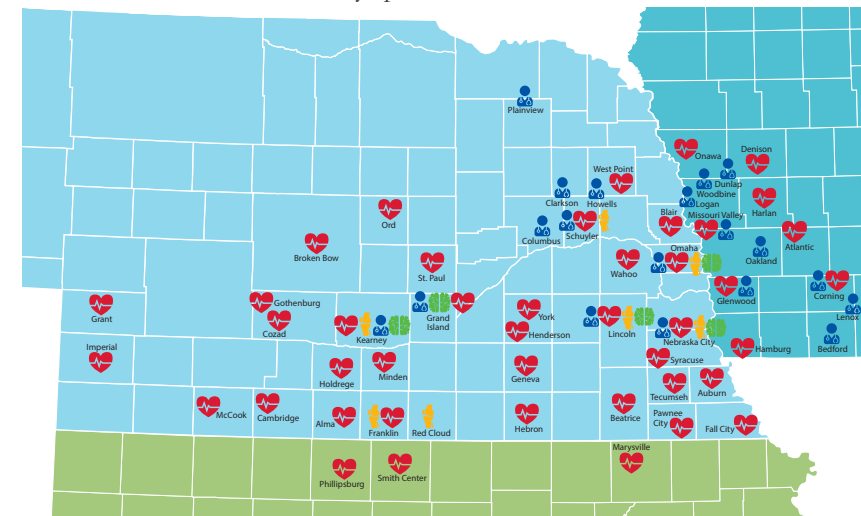
- Providers who put you at ease – in person or on screen.
- More specialties and services – on site and in your community.
- Convenience and affordability – for busy days and tight budgets.



We believe you matter. That's why we're always striving to improve our care. Our new drive-up service provides flu shots and COVID tests from your car. It's more expertise and less hassle – for the one life that is yours.

Going the distance: Our experts come to you

In addition to our Primary Care locations, our specialists tally up thousands of miles each year driving to small communities. These clinics make it possible for rural residents to receive specialty care close to home. Check out the communities a few of our many specialties serve.



-  Primary Care
-  Cardiology
-  Neurology
-  Orthopedics

Many more specialties also serve our rural communities.



Care when you need it

From sniffles to serious illnesses, CHI Health Clinic has options for your busy lifestyle.



No appointment needed!

CHI Health Clinic Priority Care (8 a.m. - 8 p.m. daily) Walk-in and never pay more than a regular office visit, including copays. CHIhealth.com/PriorityCare



24/7 care from anywhere!

CHI Health Clinic Virtual Quick Care Consultations/prescriptions for minor illnesses. CHIhealth.com/Virtual 402.717.1255



Everything under one roof!

Family Health Centers have more experts and services in one convenient location.

Find out more here.



CHI Health Creighton University Medical Center - Bergan Mercy | Omaha

Our 396-bed flagship academic medical center has served the community for more than 150 years. Here, patient care, research and education combine to advance care nationally while treating patients close to home.



Treating disease with precision



Using state-of-the-art medical equipment, our board-certified interventional radiologists tackle some of the most complex cases without major surgery. From diagnosis to treatment, the team specializes in heart, lung and brain imaging, angioplasty, stenting and more.

Advancing pulmonary care

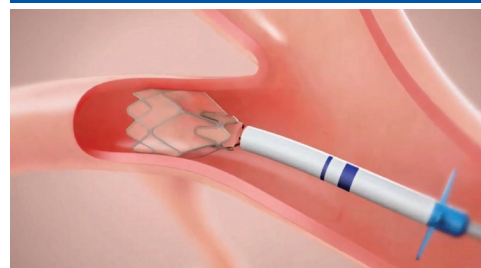


Breathing isn't easy if you have a lung condition. Our board-certified pulmonologists use the most advanced technologies to diagnose and care for pulmonary conditions – from emphysema to chronic obstructive pulmonary disease.

 More at CHIhealth.com/Pulm

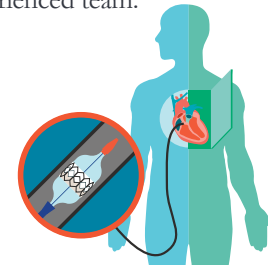
Did you know?

We were Nebraska's first hospital to use Zephyr™, a new FDA-approved lung valve treatment that helps patients with severe emphysema or COPD breathe easier without major surgery.

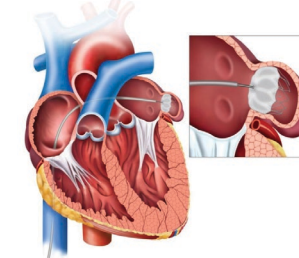


Life-saving heart care

Our cardiologists and cardiovascular surgeons diagnose and treat the most complex heart conditions in our heart clinics. From high blood pressure to cardiac catheterization to valve disease, you can trust your heart to our experienced team.



Most people with aortic valve stenosis can bypass open heart surgery and opt for a minimally-invasive approach called transcatheter aortic valve replacement (TAVR) – a procedure we were first in the region to perform.



More than 700 of our atrial fibrillation patients have lowered their stroke risk for good with a left atrial appendage occlusion (LAAO) device. We've performed the minimally invasive procedure since 2019.

Woman-centered care: Pelvic Health Center



Pelvic health issues are common, but many women don't get the care they need. At our Pelvic Health Center, a team of urologists, urogynecologists, surgeons, physical therapists and registered dietitians specialize in addressing the most sensitive issues.

- Pelvic and/or abdominal pain
- Constipation/bowel incontinence
- Urinary incontinence, urgency and/or frequency
- Painful intercourse or sexual dysfunction
- Pelvic organ prolapse

 More at CHIhealth.com/Pelvic



Level I Trauma Center

From car accidents to heart attacks, our trauma team saves lives every day. As one of 185 Level 1 Trauma Centers in the U.S.*, the highest designation available, we are equipped to treat any type of injury 24/7. We are also home to a Level III neonatal intensive care unit (NICU), offering complete care for newborns who need advanced treatment.

*Verified by the American College of Surgeons

Groundbreaking research

As a leader in clinical research, we bring the latest drugs, treatments and technology to patients in Omaha and beyond.

Our team is advancing the study of new generation devices that could reduce stroke risk in certain heart patients.

We are home to some of the brightest medical minds who are working on more than 166 clinical trials for:

- | | |
|------------------|-------------------|
| Cardiology | Pulmonary |
| Oncology | Behavioral health |
| Gastroenterology | Trauma |
| Neuroscience | Urology |
| Ob-Gyn | |



- Certified Primary Stroke Center
- Accredited for Cardiovascular Excellence
- Center for Excellence for Watchman™ heart procedures (CommonSpirit Health)
- Named one of the nation's best hospitals overall and in gastrointestinal care and critical care

CHI Health Good Samaritan | Kearney

Serving the region since 1924, our destination medical center provides specialty care from cardiology to orthopedics, maternity, behavioral health and more.



Keeping care close

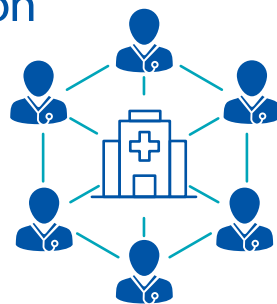
For Nebraska residents living outside of metropolitan areas, access to health care can come with significant travel time. CHI Health Good Samaritan in Kearney, Nebraska, ensures the highest standard of medical services are within reach.

Over the years, Good Samaritan has transformed from a community hospital into a thriving regional referral

center. Today, our 236-bed facility encompasses nearly 800,000 square feet on two campuses. Its service area includes 340,000 people in more than 41,000 square miles (the size of the state of Indiana). Good Samaritan's location in the region is the key; more than 50% of our patients come from outside of Buffalo County where Good Samaritan sits.

Large network serves the region

Collaborating with partner facilities ensures residents receive care when and where it's most convenient. Our physicians regularly conduct outreach clinics in locations across central Nebraska and northern Kansas, with 16 hospitals in the region comprising Good Samaritan's critical access hospital network. One of the largest networks in the state, these facilities come together in the best interests of patients who call rural communities home.



Hospital highlights

- Advanced Level II Trauma Center in a new Emergency Department (opened in 2021)
- AirCare emergency helicopter transport and the state's first hospital-based 911 service
- Region's Primary Stroke Center
- Full-service cardiac program includes open-heart surgery
- Advanced orthopedic program
- Neonatal intensive care unit
- Comprehensive neurosurgery
- Nationally accredited cancer center

For four consecutive years, Good Samaritan has ranked among the nation's best hospitals.

For the last two years, our superior care and quality outcomes have been worthy of 5 Stars, the Centers for Medicare and Medicaid Services' highest award.



CHI Health Immanuel | Omaha



We have been a caring presence in north Omaha since 1887. Today, our 356-bed hospital specializes in stroke, spine, maternity, behavioral health, cancer care and more.

Game-changing neurological care



As one of the first hospitals in the U.S. to perform a groundbreaking stroke procedure, our Neurological Institute is home to some of the most advanced neurological care in the area for conditions from stroke, epilepsy, Parkinson's disease, multiple sclerosis and other movement disorders.

Transforming stroke treatment

First neurology team in Nebraska to perform thrombectomy, a cutting-edge stroke treatment.

Only hospital in Omaha and 4th in the U.S. to be named an Advanced Thrombectomy Capable Center, recognizing our ability to treat the most complex stroke cases with 24/7 access to neurology care.



Our Pathway to Excellence® designation by the American Nurses Credentialing Center (ANCC) substantiates the professional satisfaction of nurses at Immanuel and identifies it as one of the best places to work.

Region's largest rehabilitation provider

- Ranked the top hospital in the state by U.S. News and World Report for patients recovering from serious, life-changing injuries.
- First licensed rehab unit in Nebraska to treat patients for traumatic injuries or major surgeries.
- Accredited in stroke, brain injury, spinal cord injury and amputation since 1979.

- One of the largest programs in the region for outpatient therapy after you leave the hospital with 19 locations.
- Rehabilitation team includes physical, occupational and speech therapists, and certified rehabilitation registered nurses.

More at CHIhealth.com/ImmanuelRehab

Deliver baby your way!



Expectant mothers can deliver their babies naturally at CHI Health Birth Center at Immanuel, the **first and only in-hospital birth center in Omaha.**

Expectant mothers can also choose to deliver in our more traditional Maternity Center. Both offer comfortable suites with some key differences for moms-to-be.

Birth Center:

- For healthy, low-risk moms and babies
- Midwife-centered approach
- Holistic delivery emphasizes natural pain relief

More at CHIhealth.com/BirthCenterImmanuel

Maternity Center:

- Located within full service hospital
- Round-the-clock access to specialty care
- Pain relief options include epidurals

More at CHIhealth.com/ImmanuelMaternity

CHI Health Lakeside | Omaha

Our 153-bed hospital opened in 2004 and remains the only full-service hospital in west Omaha. Families can depend on our orthopedics, cancer, maternity and 24/7 emergency care – and more.



Beating breast cancer: One scan at a time

The Breast Health Center at CHI Health Lakeside offers the most advanced screening techniques to detect and diagnose breast cancer, and performs the most scans in the state of Nebraska.

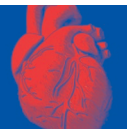
- 3D mammography, the gold standard when it comes to speed and accuracy.
- For dense breasts, enhanced screening options with MRI or ABUS (automated breast ultrasound) are both available in addition to mammography.



With dedicated breast surgeons and genetic counseling available onsite, the Breast Health Center is your one-stop shop for screenings, diagnostics and treatments.

More at CHIhealth.com/BreastHealthCenter

Did you know? CHI Health Lakeside is the only full-service hospital in west Omaha with the resources to immediately treat and care for someone having a heart attack.



Lakeside knows babies Maternity by the numbers

18,244 babies delivered, and counting!

10 spacious labor & delivery suites featuring:

- Whirlpool tubs
- Comfy queen beds
- Updated sleeper sofas

24/7

- Nurse practitioner & neonatal coverage
- Anesthesiologist on site
- Room service catered to your dietary needs

Level III NICU for babies born before 30 weeks

CHIhealth.com/LakesideMaternity



Orthopedics has you covered: Head to toe

Arthritis, joint pain and injuries may be inevitable, but don't let them slow you down. Lakeside has a team of board-certified surgeons to treat your:



Recover at home!

Orthopedic surgery doesn't always require a hospital stay. Advances have made it possible to do more procedures in an outpatient setting, or through our Lakeside Ambulatory Surgical Center.

While some surgeries are still done inpatient, you have options for your care and can safely recover from many procedures in the comfort of your own home.

Lakeside has two orthopedic robots onsite and surgeons expertly trained to perform robotic assisted joint replacements.

More at CHIhealth.com/Ortho

CHI Health Mercy Council Bluffs

Our 135-year legacy is providing exceptional health care services to southwest Iowa. Our team specializes in cardiology, cancer, maternity, orthopedics and behavioral health.



- 5,445** in-patient admissions
- 3,000** in-patient/outpatient surgeries
- 76,000** healthy patient visits
- 25,000** ED visits

Expectant mother? Expect first-class treatment



It's a good time to be an expectant mother at CHI Health Mercy Council Bluffs. Our newly renovated Obstetrics Unit offers first-class treatment for moms-to-be and babies.

Everyone remembers the place where their kids were born. Here is what mom and her new bundle of joy can look forward to:

- Hotel-style labor and delivery rooms
- Pull-out couches
- Spacious showers
- State-of-the art labor equipment
- Level II NICU for premature babies

Robotic Arm: Game-Changer for Orthopedic Surgery

We are changing the way joint replacement surgeries are performed by offering state-of-the-art robotic assisted technology. We have advanced certification for total knee and total hip replacement – it's a level of care that sets us apart.

Robotic-assisted surgery advantages

- Less pain after surgery
- Minimal scarring
- Shorter hospital stays
- Faster recovery/return to normal activities

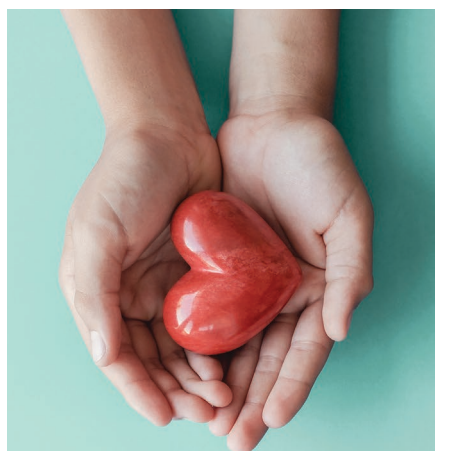
Did you know? We are the only Level III trauma center in Iowa accredited by the American College of Surgeons. Region's only total hip and knee replacement program with Joint Commission® advanced certification.



Give your heart some TLC

Most of us will have heart trouble at some point in our lives. In fact, heart disease is southwest Iowa's number one killer. The good news is our team of cardiovascular experts can help you keep your heart healthy. We can help prevent, diagnose and treat a wide range of heart conditions. Whether you have an emergency or need a check-up, our team of cardiologists and heart specialists is ready to serve you.

More at CHIhealth.com/Heart



CHI Health Midlands | Papillion



Our 58-bed hospital has served Sarpy County since 1975. We specialize in ambulatory care, acute stroke and rehabilitation, and recently partnered in veterans' care.



Caring for our veterans

The Midlands VA Community Living Center is the first in the country to be located inside a hospital.

Dedicated to serving those who've served our country, Midlands and the VA partnered to renovate the fifth and sixth floors of the hospital to provide short-term rehabilitation, restorative care, geriatric evaluation and management, and memory care services to our veterans.

Ambulatory Surgery Center (ASC) gets you home

Your time is important, and for surgeries that do not require an overnight stay, Midlands has an outpatient surgical option for convenient, high quality care. Specialties at our ASC include:

- General Surgery
- Gastroenterology
- Gynecology
- Ophthalmology
- Orthopedics
- Ear, Nose and Throat
- Pain Management
- Podiatry

CHIhealth.com/MidlandsASC

Rehabilitation gets you better

Whether you're recovering from an injury or an illness, rehabilitation is key to getting back to feeling your best. Our team of therapists and specialists provide:

- Physical therapy
- Occupational therapy
- Cardiac-pulmonary rehab
- Speech therapy
- Aqua therapy
- Pelvic floor rehabilitation
- Low vision and vision impairment rehab and therapy



Nebraska's only C-Mill! Not your average treadmill

If you need physical therapy to get back on your feet, you need the C-Mill. It's a state-of-the-art treadmill that's revolutionizing rehab by using lights, sounds, interactive virtual reality and a balance plate. The C-Mill turns your average therapy session into a fun, interactive gaming experience while improving gait, stability, balance and reducing your risk of falls.

[More at CHIhealth.com/Cmill](http://CHIhealth.com/Cmill)

CHI Health Nebraska Heart | Lincoln

Our 63-bed hospital has forged a legacy of cardiac excellence since 2003. Every day, we bring leading-edge care to patients in Nebraska, western Iowa and northern Kansas.



Reaching more hearts



Nebraska Heart is a network of more than 40 offices and hospital-based clinics that allow patients to receive care close to home.

Those who check into Nebraska Heart Hospital are treated to a universal care model. This means patients stay in the same room while tests, procedures and care come to them.

[More at CHIhealth.com/NeHeart](http://CHIhealth.com/NeHeart)

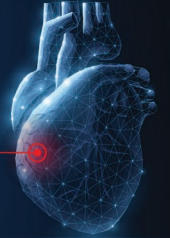


Experience matters

You want the very best for highly precise heart procedures. Our team's skill and experience are second to none. Each year, we perform:

- 500+ interventions
- 350+ open heart procedures
- 500+ implantable pacemakers & defibrillators
- 300+ structural heart devices (WATCHMAN™, TAVR & mitral clip)

Leading the way



Our expert cardiac, thoracic and vascular teams work as one to offer the most advanced and comprehensive cardiovascular care. Our facility was the first to bring many innovative services to the region.

- First** in Nebraska to provide angioplasty
- First** heart transplant in Lincoln
- First** off-pump bypass surgery
- First** Nebraska biventricular implantation
- First** drug-eluting stent
- First** heart hospital in Nebraska

Dedicated team




Alongside our physicians is a dedicated team of advanced practice clinicians, nurses, technologists and staff. Our team-based approach ensures that proper and informed decisions are made from diagnosis through treatment and rehabilitation.

CHI Health St. Elizabeth | Lincoln



Our 258-bed hospital has served the Lincoln area since 1889. We specialize in oncology, maternity, pediatric emergency, burn care and more.


Custom roadmap to fight breast cancer

 Our Multidisciplinary Clinic for Breast Cancer, the **first of its kind in Lincoln**, is designed to give patients their entire treatment plan in one day. The team, made up of surgical, medical and radiation oncologists and advanced

cancer providers, meet together with the patient to develop a plan, which allows for prompt treatment and surgical intervention.

 More at CHIhealth.com/StElizabethBreastCenter

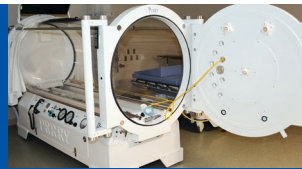
Burn center for kids and adults serves region

 The only center of its kind in Nebraska, our Regional Burn and Wound Center celebrates 50 years of service in 2023.


Our full-service burn center cares for patients from initial injury through all stages of recovery.

- Serves patients in a seven-state region (Nebraska, Colorado, South Dakota, Iowa, North Dakota, Missouri, Kansas)
- Dedicated burn teams (surgeons, nurses and therapists) treat the most critical burn injuries

Did you know? Our Regional Burn & Wound Center added Hyperbaric Oxygen Therapy (HBOT) in 2018 to help patients heal from chronic wounds.



Only pediatric ER in Lincoln!


 CHI Health Pediatric Place at St. Elizabeth was first in the state to earn a "Pediatric Ready" designation, meaning it's equipped to care for children from birth to 18 years old.


Pediatric Place's eight-bed unit is a child-friendly environment and provides quiet comfort away from

the adult ER. The care team has specialized pediatric training, supported by St. Elizabeth's Level III Trauma Center, and partners closely with Children's Hospital and Medical Center to treat:


- **Serious illnesses**
- **Traumatic injuries**
- **Cuts**
- **Post-surgical care**

Maternity care your way

 No matter what type of pregnancy and birth experience a new mom is looking for, the Women's Health team at St. Elizabeth is there every step of the way. Our hospital is equipped with a **Level III Neonatal Intensive Care Unit, a 24-hour OB Emergency Department and a full-time Maternal Fetal Medicine Specialist** for high risk pregnancy care.

 CHIhealth.com/StElizabethMaternity

In addition to the Maternity Center, the CHI Health Birth Center at Lincoln within blocks of the hospital is **the only free-standing Birth Center in the state**, working directly with St. Elizabeth's care team to offer women a more natural birth experience with midwife-centered care.

 More at CHIhealth.com/BirthCenterLincoln

St. Elizabeth has been designated as a Magnet organization since 2004 by the American Nurses Credentialing Center Magnet Recognition Program®. This prestigious designation recognizes excellence in nursing, research, patient satisfaction, leadership and nursing development. We are the **only Magnet hospital in Lincoln.**

CHI Health St. Francis | Grand Island

For more than 135 years, CHI Health St. Francis has been the cornerstone of care in Grand Island. Now totaling 155-beds, we continue to seek out the latest technology and skilled specialists you've come to expect from the region's referral center of choice.



The prestigious Magnet Recognition, the highest standard for nursing, helps St. Francis attract and retain some of the best nurses in the profession. And we believe in growing our own, each year we graduate 20 nurses from the accelerated nursing program on our 7th floor.

Growing excellence

From cardiology, neurology and surgery to cancer and maternity services, we have a full complement of specialists committed to finding new and better ways to heal here in central Nebraska. Along with our 750 employees, these are some of the ways St. Francis is investing in our community.



Areas only 24/7 Cath Lab

Innovative technology and established heart doctors when seconds count



\$32 million Surgery Department


Seven operating rooms and two endoscopy suites



Convenient Women's Clinic

Ob-Gyns and city's first licensed nurse midwives within steps of the hospital

Did you know...

 We are the first in the region to offer one-of-a-kind technology that illuminates brain tumors bright pink? With better visualization, our neurosurgeons can remove harmful cells, leaving healthy ones intact, helping our patients live fuller lives.

COMING SOON

- \$15.6 million Emergency Department remodel – 14 private rooms
- Family Health Center – office space for 31 providers

CHI Health St. Mary's | Nebraska City

Our 18-bed critical access hospital opened in 1927. We've grown a big footprint keeping primary and specialty care close to home for cardiology, maternity and more.



CHI Health St. Mary's in Nebraska City provides quality and compassionate medical care close to home. Our critical access hospital has grown into a new, 110,000-square-foot campus with primary and specialty care clinics, and our dedication to our friends and neighbors remains.

Hospital-to-home experts

Getting you home sooner and stronger is the goal of our Transitional Care Program. This specialized approach to recovery bridges the gap when going home after surgery is not an option. Our multidisciplinary approach results in shorter stays, lower readmission rates and discharge home rather than a long-term care facility.



Innovative treatment for tremors



Essential tremor patients from across the region are experiencing relief with Focused Ultrasound. The painless outpatient procedure is minimally invasive, and uses sound waves to target a small area in the brain that regulates movement. The procedure has changed the lives of those who suffer from involuntary shaking in their arms, hands and legs, and is also now approved to treat tremor dominant Parkinson's disease.

More at CHIhealth.com/FocusedUltrasound



Making miracles

Families have the best of both worlds in our Maternity Center – all the comforts of home plus advanced technology, nurses with a combined 700 years of experience in babies and certified safety measures. Welcoming four generations into the world and having the privilege to share in these unique miracles continues to be one of our greatest honors.

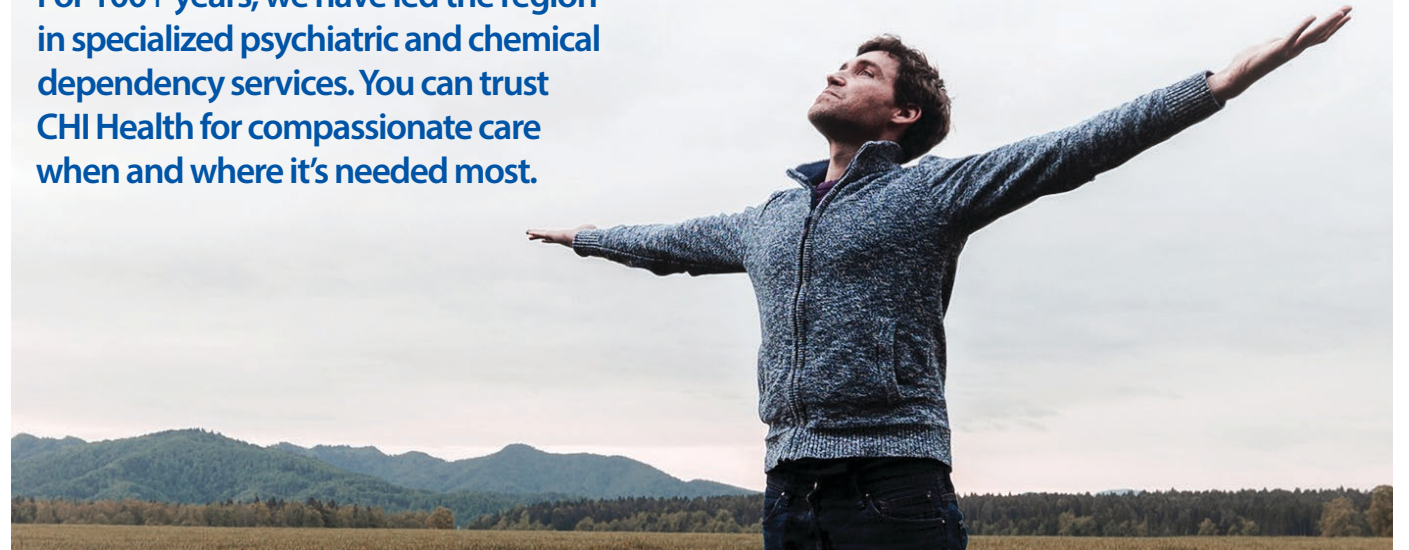
More at CHIhealth.com/Baby



We were recently named one of the nation's Top 100 Critical Access Hospitals for the second year in a row by The Chartis Group, a leading provider of analytics to the health care industry. Outstanding performance is nothing new, we've always believed our patients and staff are the best around.

CHI Health Behavioral Care

For 100+ years, we have led the region in specialized psychiatric and chemical dependency services. You can trust CHI Health for compassionate care when and where it's needed most.



Lasting Hope Recovery Center (Omaha, Nebraska)

- 64-bed adult psychiatric hospital
- Treatment/prevention services for mental illness and co-occurring substance abuse
- Assessment Center provides timely, supportive mental health assessment screenings & evaluations for those in crisis
- Psychiatric Immediate Care Clinic serves adults

Available 24/7 for walk-ins or by calling **402.717.HOPE (4673)**

CHI Health Mercy Council Bluffs / Immanuel (Council Bluffs, Iowa / Omaha, Nebraska)

- Outpatient, inpatient, partial hospitalization and residential treatment
- Treatment/prevention services for mental illness and co-occurring substance abuse
- Child and adolescent partial hospitalization (Mercy)
- Child/adolescent, adult and geriatric partial hospitalization (Immanuel)
- Psychiatric Immediate Care Clinic serves children to geriatrics
- Behavioral Procedure Center for brain stimulation treatments that relieve depression and other conditions (Immanuel only)

Call our information and referral line at **402.717.HOPE**.

Richard Young Behavioral Health (Kearney, Nebraska)

- 45-bed inpatient psychiatric hospital
- Treatment/prevention services for mental illness and co-occurring substance abuse
- Access Center provides timely, supportive mental health assessment screenings & evaluations for those in crisis

Available 24/7 for walk-ins or by calling **308.865.2000**.

St. Francis Alcohol and Drug Treatment Center (Grand Island, Nebraska)

- Residential, intensive and individualized outpatient treatment services for substance use disorders
- Treatment philosophy is based on the 12 steps of Alcoholics Anonymous
- Individual, group, family and educational sessions

For more information, call **308.398.5427**

Outpatient Therapy (Nebraska/western Iowa)

- Individualized care serves children to geriatrics
- 30+ clinic locations across Nebraska/western Iowa
- Available by appointment, walk-in or via telehealth


Find out more at CHIhealth.com/Behavioral or by calling **402.717.HOPE (4673)**

Critical Access Hospitals

More than 1 in 3 Nebraskans and 2 in 5 Iowans reside in rural areas. Our critical access hospitals in Nebraska and Iowa provide excellent health care close to home – whether it’s an ER visit, hospitalization or a clinic visit for specialty care.

Critical access hospitals: By the numbers


25
or fewer inpatient beds for personalized care


35 miles
or more from the next closest hospital


Average length of stay of
96 hours
or less for acute care patients


Provide
24/7
emergency services


Bringing rehab closer

Patients who need skilled nursing care can now transfer to one of our critical access hospitals, where they can receive acute and rehab care. This “swing bed” model is made possible by partnerships between our metro and critical access hospitals.

CHI Health Missouri Valley (Iowa)

Our 25-bed hospital has proudly served the residents of Harrison County for more than 50 years.

Care that’s close to home

 We are here to offer you high quality health care from birth to geriatric care, with walk-ins welcome. Our clinics in Dunlap, Logan, Missouri Valley, Oakland and Woodbine can meet your preventative, diagnostic and specialty care needs — and we are growing. In the past year, we recruited eight new providers to serve you.

 [More at CHIhealth.com/MissouriValley](https://CHIhealth.com/MissouriValley)

Specialty services

- Audiology
- Ear, nose and throat
- Orthopedics
- Sleep lab

Short ER wait times!

For life’s emergencies, our wait times average just **13 minutes**. We also offer patient transport to metro hospitals should more critical needs arise.

 • 5-Star Rating from the Centers for Medicare and Medicaid Services.

• “Top 20 Critical Access Hospital” (Quality) in 2022.

Notable numbers*

*July 2021-June 2022

 **288**
over night admissions


 **3,621**
ER visits

 **33,000+**
outpatient visits and surgeries

CHI Health Mercy Corning (Iowa)


Our 22-bed hospital has been treating Adams and Taylor County region like family since 1951.

Here when you need us

 Our full-time pediatrician and our support team of family practice and internal medicine providers proudly serve the communities of Bedford, Corning and Lenox. Our clinic specialties include Ob-Gyn and Cardiology.

 [More at CHIhealth.com/MercyCorning](https://CHIhealth.com/MercyCorning)

Aqua therapy and wound care


 Aqua Therapy is low-impact rehabilitation for regaining strength with less pain. It’s also for pre-physical therapy prior to surgery. A certified nurse practitioner specializing in wound care also helps patients recover.

 In 2021, the National Rural Health Association recognized us as a “Top 20 Critical Access Hospital” for Patient Perspective.

CHI Health Schuyler (Nebraska)

Our 25-bed hospital has evolved over the last two decades to serve the unique needs of the Colfax County region.

Care with you in mind

 As our community becomes more diverse, we strive to increase our number of bilingual caregivers. With friendly, expert staff here to meet you, our 25-bed critical access hospital offers:

- **24-hour emergency services**
- **Inpatient medical and surgical care**
- **Outpatient surgery and observation**
- **Outpatient diagnostic and therapeutic services**

 [More at CHIhealth.com/Schuyler](https://CHIhealth.com/Schuyler)

Primary and specialty care


From infant to geriatric care, our clinics also serve the everyday health care needs at our Schuyler, Howells and Clarkson locations, with in-person and virtual specialty visits for:

- Cardiology and cardiac rehab
- Orthopedics
- Podiatry
- Gastrointestinal
- Gynecology
- General Surgery
- Tele-specialties: Endocrinology, ENT, Psychiatry
- Physical therapy, Occupational Therapy, Speech
- On site ECHO, MIR, Sleep Studies


CHI Health Plainview (Nebraska)

Our 15-bed hospital has been serving Pierce, Antelope and Knox counties with quality care since 1968.

Hometown healing

 Whether it’s preventative care, minor illnesses, chronic health conditions or pediatric care needs, the Plainview Rural Health Clinic offers low wait times and same-day access. Even if you deliver your baby outside of the area, our Advanced Practice Providers (APP) can meet your child’s pediatric needs.

 [More at CHIHealth.com/Plainview](https://CHIHealth.com/Plainview)

 • “Top 20 Critical Access Hospital” in quality for four years in a row by the National Rural Health Association.

• Scores above the 90th percentile in patient experience with the Emergency Department scoring as high as the 99th percentile.

Clinic specialties

- Pain, urology, and sleep studies
- Diagnostics
- Lung & bone density scans
- Cardiology
- Home health
- Nephrology
- Pulmonology
- GI procedures
- Telehealth

135 years of giving back

Community Benefit

Did you know that CHI Health provided \$201 million in charity care* in Nebraska, Iowa, North Dakota and Minnesota in 2021 alone. And our impact totaled \$265.3 million in total community benefit?

That's millions in financial assistance to patients, plus support for services and programs to improve community health, financial and in-kind contributions to partnering organizations, research and much more.

That's a lot of giving. It is our calling. It is our mission.

 More at CHIhealth.com/CommunityBenefit



\$62 million in community program support for:



Violence prevention



Housing



Food insecurity



Mental and behavioral health needs

Giving Impact



Grand Island

- \$30,000 for multicultural coalition supporting culturally-appropriate care for at-risk immigrant communities
- Violence prevention grant addressing human trafficking
- Primary care services to 239 students and behavioral health services to 138 students at Grand Island Senior High School

Kearney

- \$65,000 to increase community access to healthy foods
- \$25,000 for the HelpCare Clinic serving the uninsured
- Grant for violence prevention in Buffalo County

Lincoln

- \$10,000 to Clinic with a Heart for specialty/urgent care clinics providing free health care services

Omaha

- 259 routine immunizations for uninsured children and Adults
- Supported Alzheimer's Association hotline
- Peer support groups and education to 966 individuals/families about dementia
- Supported mental health task force improving care for school-age children/families

Nebraska City

- Secured \$1 million government grant to implement new opioid use prevention, treatment and recovery services

Your health is our happiness.



Primary Care

Be ready for life's adventures. Same-day & walk-in care plus extended hours.
CHIhealth.com/Clinic



Orthopedic Care

Get back to what moves you. Non-surgical & surgical solutions.
CHIhealth.com/Ortho



Women's Care

Girl power starts with a strong Ob-Gyn. Expert care from puberty to menopause.
CHIhealth.com/Women



Heart Care

Keep the beat with expert care. 90+ cardiology specialists & subspecialists.
CHIhealth.com/Heart



Maternity Care

Your baby, your birth experience. In-hospital & stand-alone birth centers.
CHIhealth.com/Baby



Cancer Care

Hope when you need it most. Leading experts & national clinical trials.
CHIhealth.com/Cancer



*Includes charity care as well as the unpaid costs of Medicaid for fiscal year 2022.



The McAuley Fogelstrom Center
 12809 W. Dodge Road
 Omaha, NE 68154

NONPROFIT ORG
 US POSTAGE
PAID
 OMAHA, NE
 PERMIT NO. 361

Care where you are



CHIhealth.com

Hospital Locations

NEBRASKA

Grand Island

CHI Health St. Francis

Kearney

CHI Health Good Samaritan

Lincoln

CHI Health St. Elizabeth

CHI Health Nebraska Heart

Omaha

CHI Health Creighton
 University Medical Center
 - Bergan Mercy

CHI Health Immanuel

CHI Health Lakeside

CHI Health Midlands

Nebraska City

CHI Health St. Mary's

Plainview

CHI Health Plainview

Schuyler

CHI Health Schuyler

IOWA

Corning

CHI Health Mercy Corning

Council Bluffs

CHI Health Mercy

Council Bluffs

Missouri Valley

CHI Health Missouri Valley

Clinic Locations

150+ primary and specialty care clinics across Nebraska and western Iowa